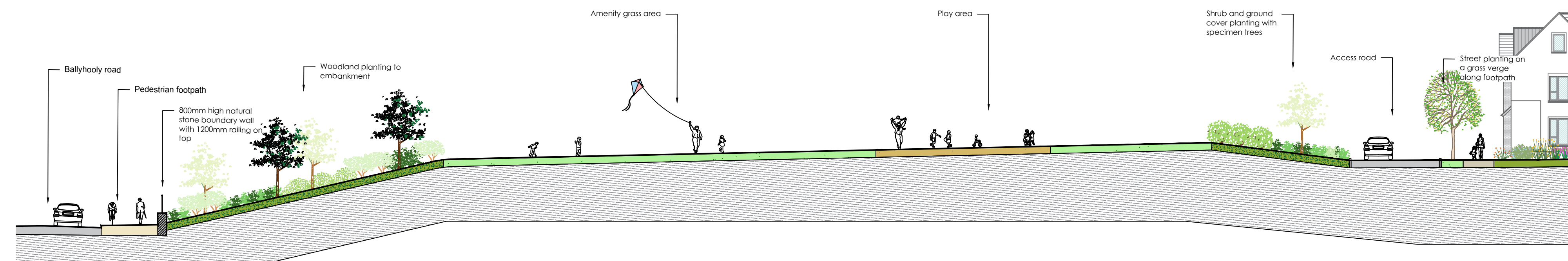
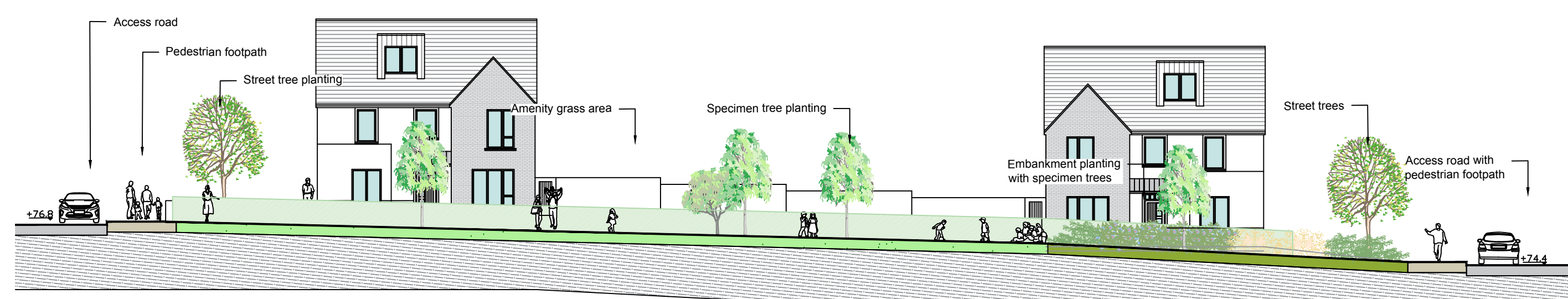


LEGEND

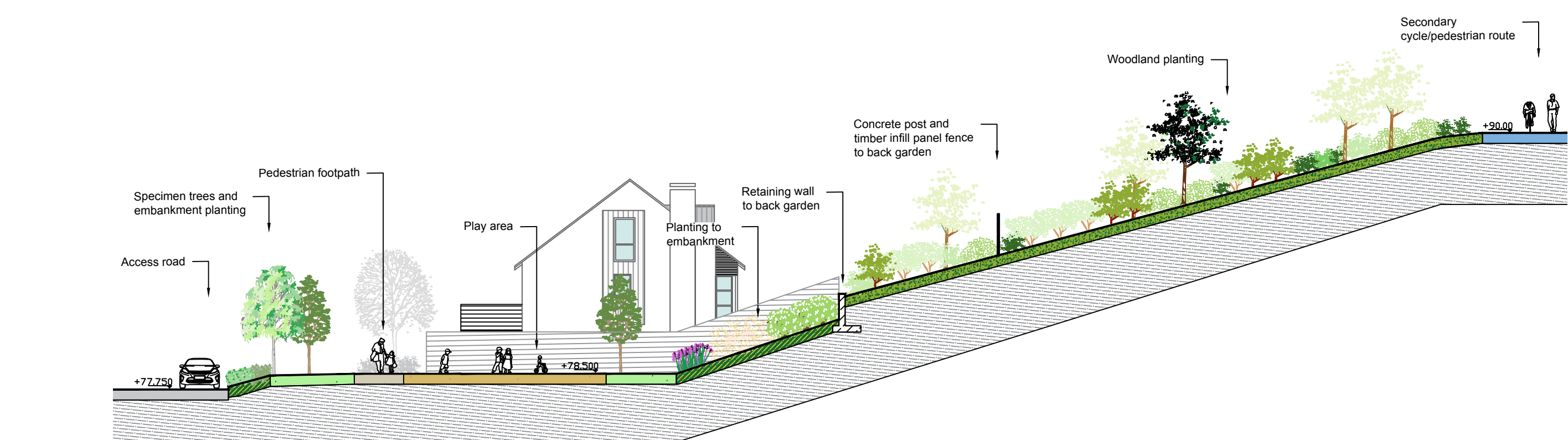
- PUBLIC AMENITY GRASS
 - AMENITY GRASS RESIDUAL LANDS/MEADOWS FUTURE PARK AREA
 - SCHOOL ZONED LAND TO BE RE-PROFILED FOR OVERBURDEN STORAGE
 - ZONED RESIDENTIAL LANDS
 - AREA DESIGNATED FOR PROVISION OF THE MAYFIELD KILBARRY LINK ROAD/BALLYCOLVOY ROAD JUNCTION (NOTE STEEPLY SLOPING TOPOGRAPHY TO BE CONSIDERED)
 - PRIMARY CYCLE/PEDESTRIAN ROUTE 1:20 SLOPE
 - SECONDARY CYCLE/PEDESTRIAN ROUTE
 - MOWN OR GRAVEL PATH THROUGH MEADOW AREA
 - PROPOSED BUS STOP
 - NEIGHBOURHOOD & LOCAL PLAY AREA - compacted ballyusk gravel finish
 - SEATING AREAS
 - WAYLEAVE - 110 KV Constraint Corridor
 - LOCATION FOR 35KV TOWER
 - INDICATIVE LOCATION FOR BIRD BOXES
 - PLAY EQUIPMENT
 - CRECHE OPEN SPACE AREA WITH INDICATIVE SAFETY SURFACE, NATURAL PLAY ELEMENTS AND SENSORY PLANTING
 - FOOTPATH
 - ACCESS ROAD
 - RAMPED PEDESTRIAN CROSSING
 - SHARED SURFACE AREA
 - BIN STORE LOCATION
 - SMALL UNIT PAVING TO REAR GARDEN
 - FEATURE PAVING TO FRONT GARDEN
 - PAVING TO CAR PARK
 - FEATURE PAVING TO COURTYARD AND COMMUNITY CENTRE
 - PROPOSED RETAINING WALL
 - PROPOSED 1.8m HIGH WELD MESH FENCE
 - SITE BOUNDARY
 - LAND IN APPLICANT'S OWNERSHIP
- REFER TO ENGINEERS' DRAWINGS FOR SUDS MEASURES FOR BOUNDARY TREATMENT REFER TO DRG. NO.17316-2-112.
- INDICATIVE SOFT LANDSCAPE**
- STREET TREES TO INCLUDE:**
Pyrus calleryana 'Chanticleer', 20-25cm gth, 6+m ht.
Ulmus 'Lobel', 18-20cm gth, 5m ht.
Tilia cordata 'Greenspire' 20-25cm gth, 6m+ ht, 4+tr.
Quercus robur 'Koster', 20-25cm gth, 6m ht.
 - SPECIMEN STREET TREES TO INCLUDE:**
Betula utilis var. *jacquemonti* 14-16cm gth, 3-4m, RB.
Parrotia persica multi stem 14-16cm gth, 3-4m, RB.
Prunus serotina multi-stem 14-16cm gth, 3-4m, RB.
Fagus sylvatica 14-16cm gth, 3-4m, RB.
Sorbus aucuparia 14-16cm gth, 3-4m, RB.
Pinus sylvestris 14-16cm gth, 3-4m, RB.
Liquidambar styraciflua, 14-16cm gth, 3-4m ht, RB.
 - WOODLAND PLANTING WITH UNDERSTOREY TO INCLUDE**
 - Trees to be planted at 3m centres:
Quercus petraea, 12-14cm gth, 3m ht, BR.
Betula pendula 12-14cm gth, 3m ht, BR.
Fagus sylvatica, 12-14cm gth, BR.
Corylus avellana, MS 2.0-2.5m ht, BR.
Alnus glutinosa, 12-14cm gth, 3m ht, BR.
Pinus sylvestris, 120-150cm, RB.
Larix decidua, 120-150cm, RB.
Populus tremula, 12-14cm gth, 3m ht, BR.
 - Shrubs to be planted at 1m centres:
Corylus avellana, 90-120cm ht, BR.
Crataegus monogyna, 90-120cm ht, BR.
Ilex aquifolium, 60-90cm ht, RB.
Viburnum opulus, 90-120cm ht, BR.
Prunus spinosa, 90-120cm ht, BR.
Sambucus nigra, 90-120cm ht, BR.
Euonymus europaeus, 90-120cm ht, BR.
Rosa canina, 90-120cm ht, BR.
Hedera hibernica, 2L, CG.
 - INDICATIVE OUTLINE OF EXISTING VEGETATION RETAINED**
 - HEDGEROW TO BOUNDARY TO INCLUDE**
 5% *Quercus petraea* BR, 6-8cm girth
 10% *Corylus avellana* BR, 90-120cm ht
 10% *Sambucus nigra* BR, 90-120cm ht
 35% *Crataegus monogyna* BR, 90-120cm ht
 35% *Prunus spinosa* BR, 90-120cm ht
 5% *Ilex aquifolium* CG, 90-120cm ht
 - FORMAL HEDGE TO INCLUDE**
Ilex aquifolium CG, 90-120cm ht
Fagus sylvatica CG, 90-120cm ht
Buxus sempervirens, CG, 40-50cm ht
 - SHRUBS AND GROUND COVER PLANTING TO INCLUDE**
Sarcococca hookeriana var. *humilis*, CG, SL
Viburnum davidii, CG, SL
Lavandula angustifolia, CG, SL
Hypericum hidcotae, CG, SL
Cornifolium coggiastrum, CG, SL
Choiysa ternata, CG, SL
Acroba japonica 'Variegata', CG, SL
Ceanothus thyrsiflorus var. *repens*, CG, SL
Fatsia japonica, CG, SL
 - SEMI-NATIVE SHRUB PLANTS TO EMBANKMENT**
Hypericum hidcotae, CG, SL
Corylus avellana, 90-120cm ht, BR.
Crataegus monogyna, 90-120cm ht, BR.
Ilex aquifolium, 60-90cm ht, RB.
Viburnum opulus, 90-120cm ht, BR.
Prunus spinosa, 90-120cm ht, BR.
Euonymus europaeus, 90-120cm ht, BR.
Spiraea 'Arguta', SL, PG at 1m spacing
 - WILDFLOWER MEADOW PLANTING**
Allium schoenoprasum, CG, PG
Erysium 'Bowles Mauve', CG, SL
Lavandula hidcotae, CG, SL
Nepeta 'Blue Carpet', CG, SL
Panicum affinis 'Superbe', CG, SL
Rosmarinus officinalis 'Miss Jessop's Upright', CG, SL
Stachys Byzantina, CG, SL
Silene tenuislimba 'Pony Tails', CG, SL
Thymus vulgaris, CG, SL
Verbena borariensis CG, SL



SECTION 1 - 1, SCALE 1:200 @ A0



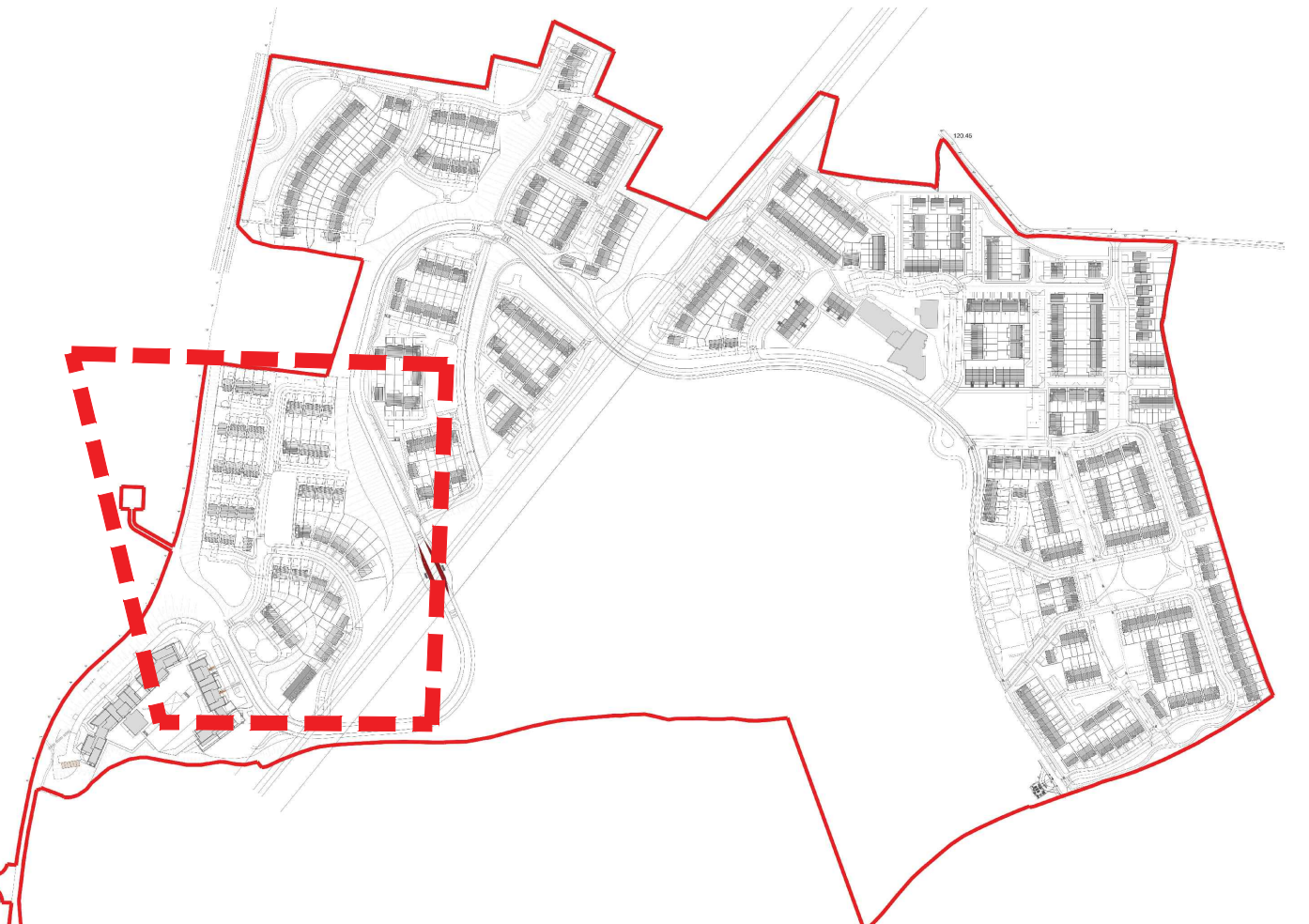
SECTION 2 - 2, SCALE 1:200 @ A0



SECTION 3 - 3, SCALE 1:200 @ A0



SECTION 4 - 4, SCALE 1:200 @ A0



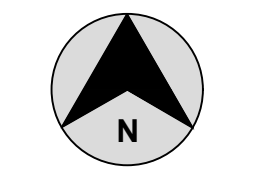
KEY SITE PLAN

NOTE: THIS DRAWING IS INTENDED FOR THE PURPOSE OF MAKING A PLANNING APPLICATION AND MAY NOT BE USED FOR ANY OTHER PURPOSE.

REV	DATE	AMENDMENT

CUNNANE STRATTON REYNOLDS
LAND PLANNING & DESIGN

CORK OFFICE
CORLEY HALL, COTTERS STREET CORK
TEL 021 496 6224 FAX 021 496 9012
EMAIL corinfo@csrlandplan.ie



PROJECT:	DATE:	NOVEMBER 2019
PROPOSED STRATEGIC HOUSE DEVELOPMENT, LAHARDANE, BALLYVOLANE, CO. CORK	SCALE:	1:500 @ A0
DRAWING:	DRAWN:	AT, NC
LANDSCAPE MASTER PLAN NEIGHBOURHOOD 1	CHECKED:	JK
	DRAWING NO.:	17316-2-103